

Now Leasing. . . Auburn Town Center Auburn, CA

Location I-80/Elm, Auburn, CA

Size 2,100 SF

Tenants



McCaulou's Department Store

Demographics

	<u>1.5 -Miles</u>	<u>3-Miles</u>	<u>5-Miles</u>
2008 Population Est.	11,284	24,092	40,510
2008 Avg. Family Income	\$83,099	\$90,638	\$91,360

Availability Shops available now

Traffic Counts

I-80	72,000 ADT (2007) Source: Caltrans
Elm Avenue	13,569 ADT (2006) Source: City of Auburn

Comments

Auburn Town Center is located in the "heart of Auburn". This neighborhood center is ideally located at I-80 and Elm Avenue near Hwy 49 and is anchored by Save Mart, CVS Pharmacy, and McCaulou's Department Store. The center has excellent access from I-80 and Hwy 49 and has plenty of convenient parking.

For Further Information, Contact:



2255 Watt Avenue, Suite 160 / Sacramento, CA 95825

John Copeland

916-576-3703

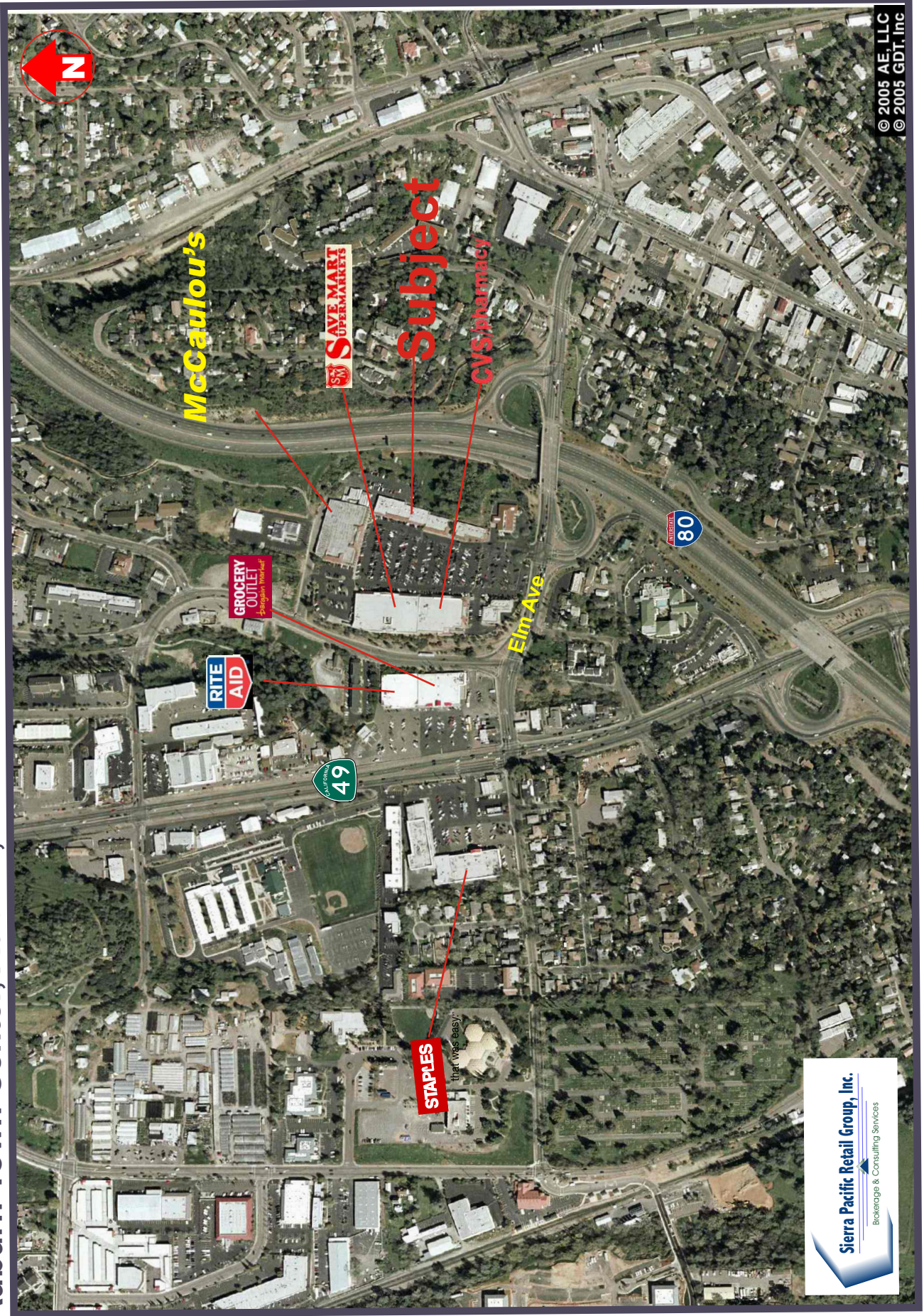
john@sprg.com

www.sprg.com

CA DRE #01210293

The information provided herein is for general purposes only and is subject to change, without notice, from time to time. Nothing contained herein is intended to be a binding representation. The owner and broker make no representation as to the accuracy of the information contained herein, or as to the character, occupancy, or configuration of the property described herein. It is the responsibility of the reader to independently verify all the information.

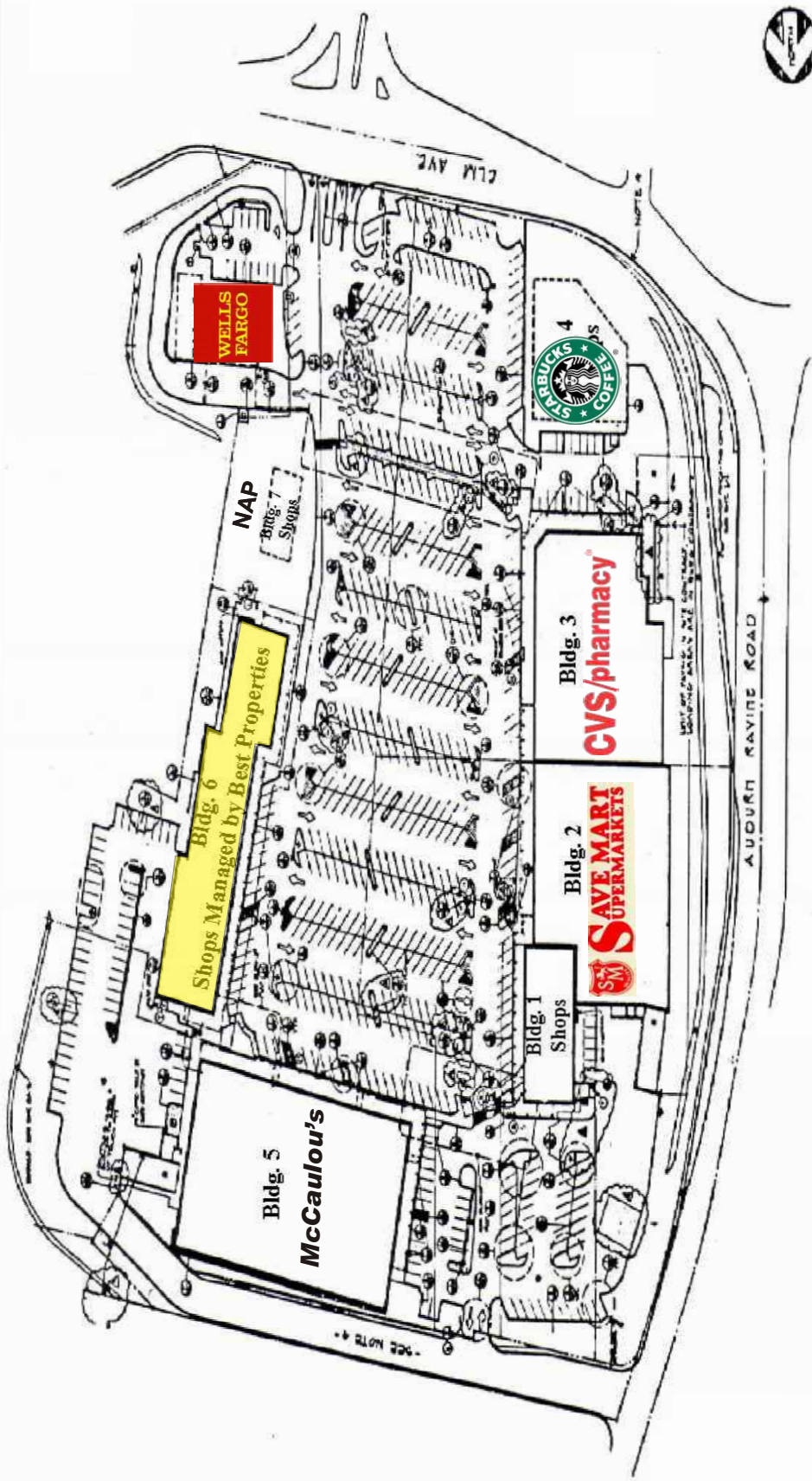
Auburn Town Center, Auburn, CA



Sierra Pacific Retail Group, Inc.
Brokerage & Consulting Services

© 2005 AE, LLC
© 2005 GDT, Inc

AUBURN TOWN SHOPPING CENTER

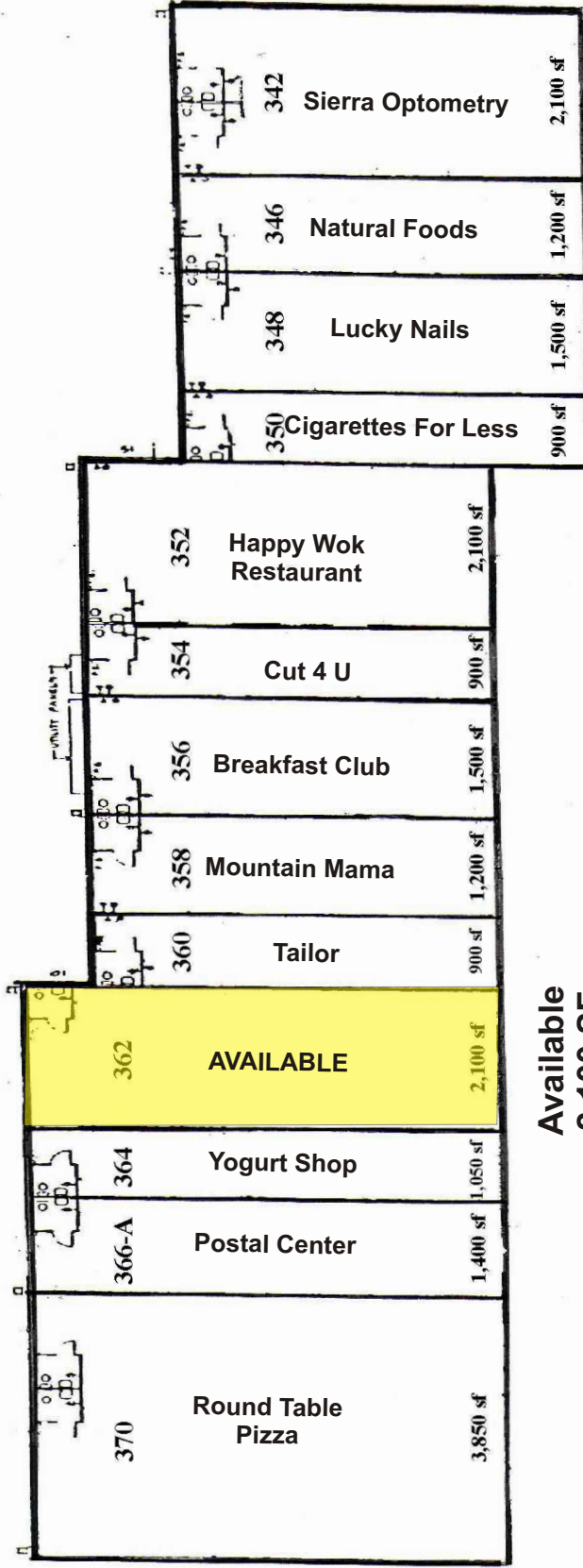


**Elm Avenue and Auburn Ravine Road
Auburn, CA 95603**

Contact: John Copeland 916-576-3700
2255 Watt Avenue, Suite 160 / Sacramento, CA 95825



AUBURN TOWN SHOPPING CENTER



Available
2,100 SF



**Building 6 — 342 through 370 Elm Avenue
Auburn, CA 95603**

Contact: John Copeland 916-576-3700
2255 Watt Avenue, Suite 160 / Sacramento, CA 95825



Pitney Bowes MapInfo Socio Economic Benchmark Report (%)

Prepared by: AnySite



Auburn Town Center
1 80 & Elm Ave Auburn, CA 95603

20 October 2009

Coordinates Longitude: -121.071800
Latitude: 38.903370

	1.5 MILE RING 7.07 SQ/MI	3 MILE RING 28.27 SQ/MI	5 MILE RING 78.53 SQ/MI
POPULATION			
2000 Population	11,168	23,010	38,090
2008 Population	11,284	24,092	40,510
2013 Population	11,762	25,535	43,231
% Population Change 1990-2000	6.05%	10.67%	13.57%
% Population Change 2000-2008	1.04%	4.70%	6.35%
Median Age	39	41	41
Population in Group Quarters (2000)	186	386	1,175
Population in Group Quarters (2008)	187	388	1,187
Population in Group Quarters (2013)	189	393	1,197
HOUSEHOLDS			
2000 Households	4,961	9,659	15,254
2008 Households	5,104	10,314	16,516
2013 Households	5,347	10,994	17,726
% Households Change 1990-2000	7.99%	12.24%	14.56%
% Households Change 2000-2008	2.88%	6.78%	8.27%
Average Household Size (2000)	2.2	2.3	2.4
Average Household Size (2008)	2.2	2.3	2.4
Average Household Size (2013)	2.2	2.3	2.4
FAMILIES			
Family Households (2000)	89.17%	91.24%	91.80%
Family Households (2008)	56.17%	61.58%	64.63%
Family Households (2013)	55.68%	61.08%	63.97%
Nonfamily Households (2000)	42.25%	36.71%	33.34%
Non-Family Households (2008)	43.83%	38.42%	35.37%
Non-Family Households (2013)	44.32%	38.92%	36.03%
Population in Family Households (2000)	75.95%	79.79%	80.61%
Population in Family Households (2008)	73.66%	78.07%	78.88%
Population in Family Households (2013)	74.44%	78.95%	79.77%
Population in Non-Family Households (2000)	22.39%	18.53%	16.30%
Population in Non-Family Households (2008)	24.68%	20.32%	18.19%
Population in Non-Family Households (2013)	23.95%	19.52%	17.46%

Pitney Bowes MapInfo Socio Economic Benchmark Report (%)

Prepared by: AnySite



Auburn Town Center
1 80 & Elm Ave Auburn, CA 95603

20 October 2009

Coordinates Longitude: -121.071800

Latitude: 38.903370

	1.5 MILE RING 7.07 SQ/MI	3 MILE RING 28.27 SQ/MI	5 MILE RING 78.53 SQ/MI
INCOME			
Per Capita Income (2000)	\$23,501	\$24,604	\$24,745
Per Capita Income (2008)	\$32,073	\$33,687	\$33,784
Per Capita Income (2013)	\$36,352	\$38,345	\$38,306
Average Household Income (2000)	\$52,682	\$58,746	\$61,543
Average Household Income (2008)	\$70,062	\$77,636	\$78,814
Average Household Income (2013)	\$79,153	\$88,068	\$89,623
Median Household Income (2000)	\$42,823	\$47,334	\$48,060
Median Household Income (2008)	\$52,242	\$57,771	\$58,688
Median Household Income (2013)	\$57,315	\$63,877	\$64,881
Average Family Income (2000)	\$61,860	\$67,751	\$70,975
Average Family Income (2008)	\$83,099	\$90,638	\$91,360
Average Family Income (2013)	\$93,946	\$103,697	\$104,185
Median Family Income (2000)	\$54,479	\$58,906	\$59,014
Median Family Income (2008)	\$64,452	\$71,762	\$72,238
Median Family Income (2013)	\$71,961	\$81,016	\$80,840
Aggregate Income (2000)	\$262,461,760	\$566,138,081	\$942,532,337
Aggregate Income (2008)	\$361,906,950	\$811,578,916	\$1,368,576,913
Aggregate Income (2013)	\$427,572,115	\$979,145,424	\$1,656,018,306
HOUSEHOLD INCOME			
Household Income < \$10,000 (2008)	6.60%	4.90%	4.42%
Household Income \$10,000-\$14,999 (2008)	5.01%	4.15%	3.64%
Household Income \$15,000-\$19,999 (2008)	5.82%	5.29%	4.85%
Household Income \$20,000-\$24,999 (2008)	4.54%	4.79%	4.81%
Household Income \$25,000-\$29,999 (2008)	3.35%	3.53%	4.24%
Household Income \$30,000-\$34,999 (2008)	6.86%	6.10%	5.79%
Household Income \$35,000-\$39,999 (2008)	5.62%	4.87%	5.09%
Household Income \$40,000-\$44,999 (2008)	4.80%	4.45%	4.86%
Household Income \$45,000-\$49,999 (2008)	4.68%	4.38%	4.60%
Household Income \$50,000-\$59,999 (2008)	10.11%	9.48%	8.71%
Household Income \$60,000-\$74,999 (2008)	10.66%	11.18%	10.84%
Household Income \$75,000-\$99,999 (2008)	12.54%	13.70%	12.99%

Pitney Bowes MapInfo Socio Economic Benchmark Report (%)

Prepared by: AnySite



Auburn Town Center
1 80 & Elm Ave Auburn, CA 95603

20 October 2009

Coordinates Longitude: -121.071800
Latitude: 38.903370

	1.5 MILE RING 7.07 SQ/MI	3 MILE RING 28.27 SQ/MI	5 MILE RING 78.53 SQ/MI
Household Income \$100,000-\$124,999 (2008)	8.05%	9.33%	9.60%
Household Income \$125,000-\$149,999 (2008)	4.37%	4.57%	5.16%
Household Income \$150,000-\$199,999 (2008)	3.19%	4.28%	5.39%
Household Income > \$200,000 (2008)	3.80%	4.99%	5.01%
EDUCATION			
Population Age 25+ (2008)	70.58%	71.91%	71.98%
Less than 9th Grade (2008)	4.97%	4.19%	3.98%
9th-12th Grade No Diploma (2008)	5.83%	5.43%	5.69%
HS Graduate (2008)	27.64%	29.37%	29.52%
College No Diploma (2008)	26.76%	25.19%	24.33%
Associate Degree (2008)	10.23%	10.33%	10.42%
Bachelor Degree (2008)	15.92%	16.60%	16.79%
Graduate or Prof School Degree (2008)	8.65%	8.90%	9.27%
ETHNICITY			
% White (2008)	87.82%	87.96%	87.41%
% Black (2008)	0.72%	0.68%	0.71%
% Amer Indian/Alaska Native (2008)	1.44%	1.29%	1.34%
% Asian (2008)	3.14%	3.45%	3.62%
% Nat Hawaiian/Oth Pacific Islander (2008)	0.12%	0.10%	0.12%
% Some Other Race (2008)	2.86%	2.96%	3.00%
% Population Hispanic (2008)	8.53%	8.12%	7.99%
% Population Non-Hispanic (2008)	91.47%	91.88%	92.01%
BUSINESS COUNTS			
Total Establishments	1,285	2,025	2,840
Total Employees	12,038	23,391	39,605